

Resilient O'ahu

City and County of Honolulu
Office of Climate Change,
Sustainability and Resiliency





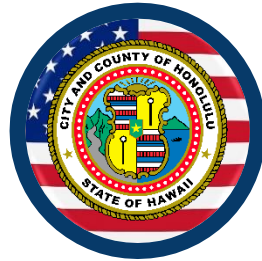
**Green
City Operations**



**Reduce Climate
Emissions & Impact**



**Promote Resilient
Communities**



**Coordinate with
Federal & State Agencies**



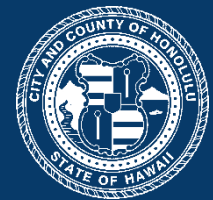
**Ensure Sustainable
City Plans & Policies**

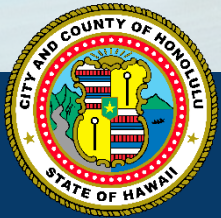


**Facilitate Climate
Change Commission**

Mandate for Action

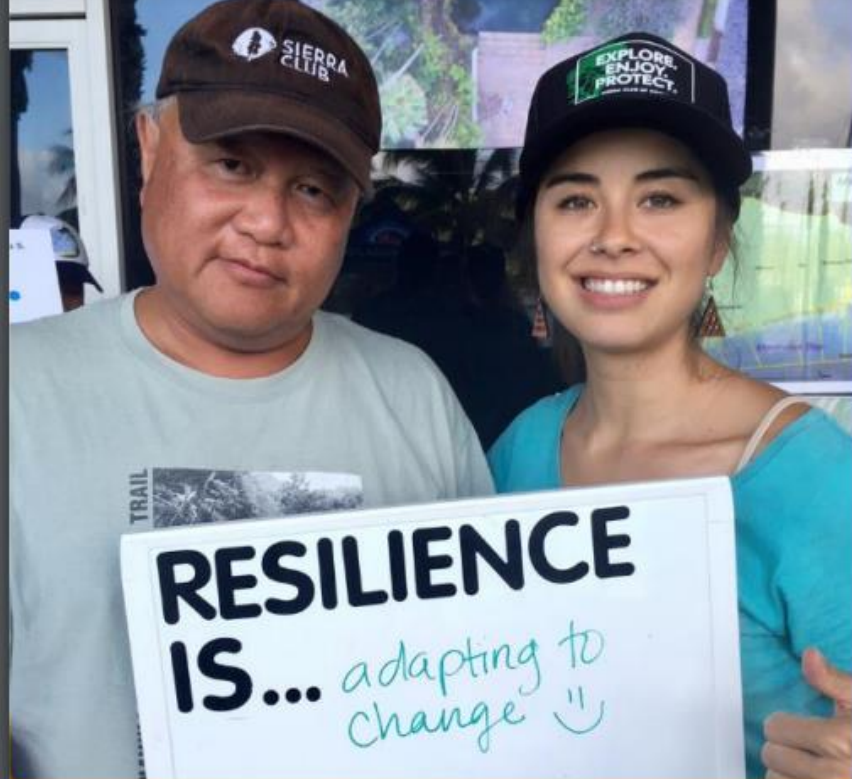
City Charter Amendment
Ordinance 20-47





Climate Impacts Here Now





Welcome to Climate Ready O'ahu

Virtual Meetings Round 2





A strategy to reduce O'ahu's greenhouse gas emissions from energy, transportation, and waste sectors

One Climate One O'ahu

CITY & COUNTY OF HONOLULU

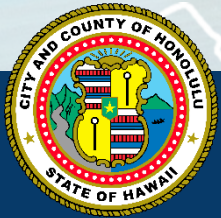
**CLIMATE
ACTION PLAN
2020-2025**



UHERO
THE ECONOMIC RESEARCH ORGANIZATION
AT THE UNIVERSITY OF HAWAII

ISR
UNIVERSITY OF HAWAII AT MANA'Ō

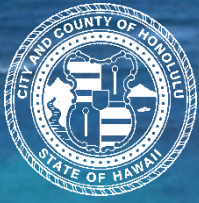




Climate Action

- 1 Encourage density and mixed land use in strategic areas
- 2 Enable and provide multiple modes of green transportation
- 3 Encourage mode shift through parking efficiency
- 4 Electrify the City Fleet and support high efficiency vehicles
- 5 Reduce energy demand by increasing energy efficiency
- 6 Maximize energy efficiency and renewable energy throughout City operations and assets
- 7 Expand renewable energy planning and expedite permitting
- 8 Promote waste prevention
- 9 Maximize waste resource efficiency





Mahalo!
Resilientoahu.org