



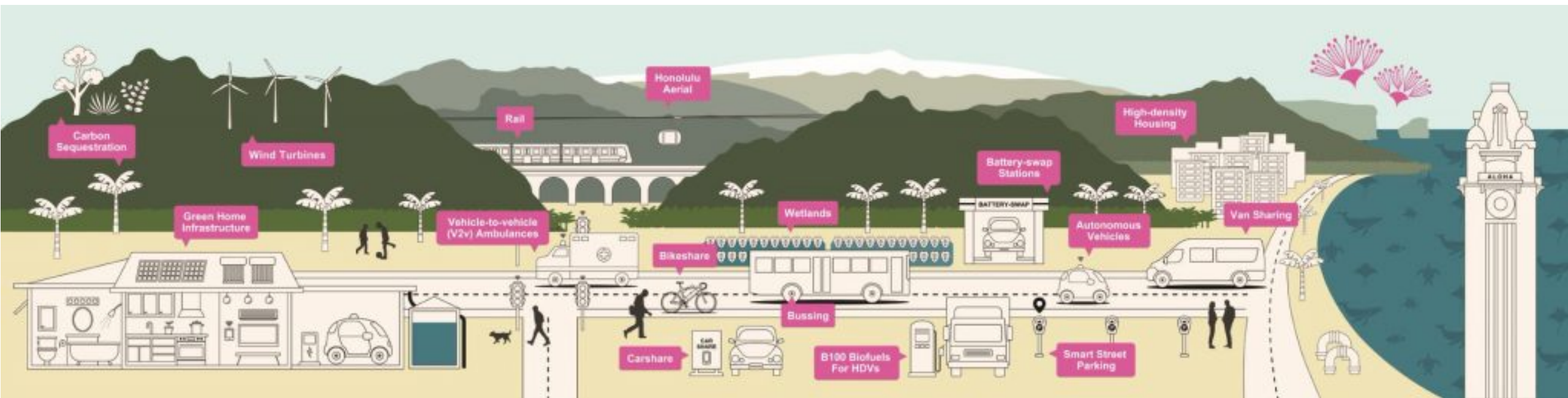
Grants-to-Projects Bridge

Reframe the future of infrastructure in Hawai'i

Leah Laramee

State of Hawai'i Climate Change Mitigation and Adaptation Coordinator

Climate Ready Hawai'i





Climate Change Impacts in Hawai'i



**Rising Sea
Levels**



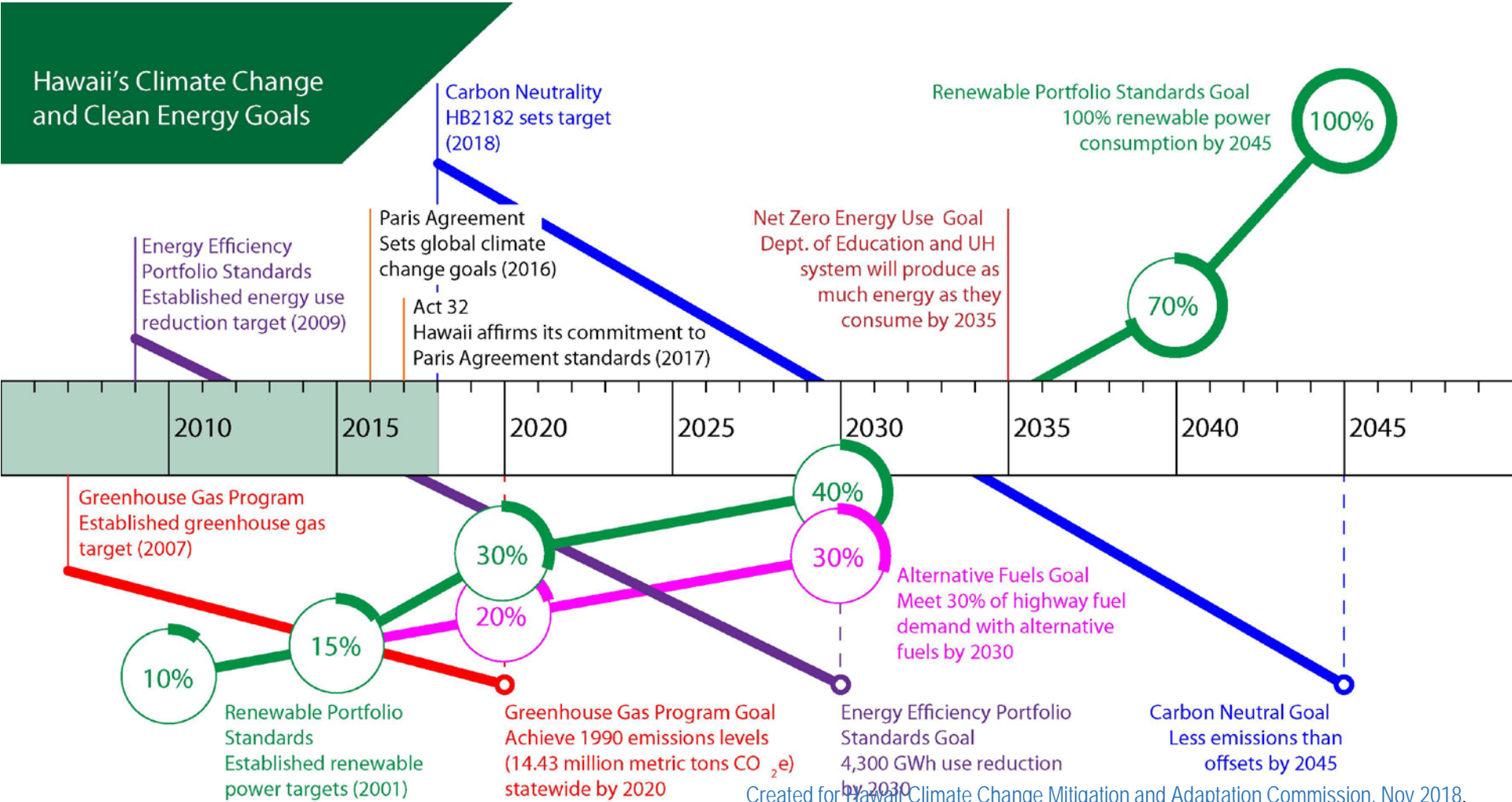
**Rising
Temperatures**



**Less & Heavy
Rain**



Hawai'i Has A Lot of Goals



Created for Hawaii Climate Change Mitigation and Adaptation Commission. Nov 2018.



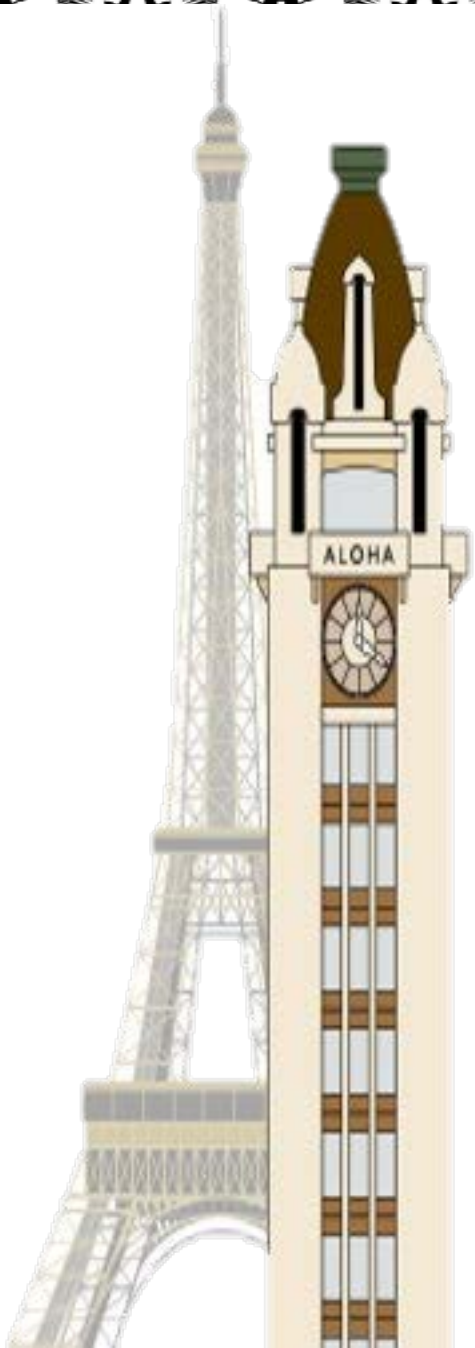
Why a Climate Commission?

The Paris Agreement

2016: 197 countries agree to limit global temperature rise below 2°C.

Hawaii established the commission to develop climate change mitigation and adaptation strategies and goals to help guide planning and implementation statewide.

Identify vulnerable people, communities, industries, ecosystems, and the potential economic ramifications for climate change related impacts.





Who is on the Commission?

Multi-Jurisdictional Effort

- 20 members
- 2 co-chairs--DLNR and OPSD
- Legislators
- County Planning Directors
- Directors and Chairs of State Departments and Boards

Commission Members



MIKE MCCARTNEY, DIRECTOR
DEPARTMENT OF BUSINESS,
ECONOMIC DEVELOPMENT, &
TOURISM



GEORGE KAM, CHAIRPERSON
BOARD OF DIRECTORS OF THE
HAWAII TOURISM INDUSTRY



PHYLLIS SHIMABUKURO-GEISER,
CHAIRPERSON
BOARD OF AGRICULTURE



MICHELE CHOUTEAU MCLEAN, DIRECTOR
COUNTY OF MAUI, DEPARTMENT
OF PLANNING



ZENDO KERN, DIRECTOR
COUNTY OF HAWAII, DEPARTMENT
OF PLANNING



KA'AINA S. HULL, DIRECTOR
COUNTY OF KAUAI, DEPARTMENT
OF PLANNING



SYLVIA HUSSEY, CHIEF EXECUTIVE OFFICER
OFFICE OF HAWAIIAN AFFAIRS



WILLIAM J. AILĀ, JR., CHAIRPERSON
HAWAIIAN HOMES COMMISSION



JADE BUTAY, DIRECTOR
DEPARTMENT OF TRANSPORTATION



MIKE GABBARD, CHAIR
SENATE COMMITTEE ON
AGRICULTURE AND ENVIRONMENT



LORRAINE R. INOUE, CHAIR
SENATE COMMITTEE ON WATER &
LAND



NICOLE E. LOWEN, CHAIR
HOUSE COMMITTEE ON ENERGY AND
ENVIRONMENTAL PROTECTION



ELIZABETH CHAR, DIRECTOR
DEPARTMENT OF HEALTH



CATHERINE PAYNE, CHAIRPERSON
BOARD OF EDUCATION



DEAN UCHIDA, DIRECTOR
CITY & COUNTY OF HONOLULU,
DEPARTMENT OF PLANNING AND
PERMITTING



DAVID A. TARNAS, CHAIR
HOUSE COMMITTEE ON WATER &
LAND



MAJOR GENERAL KENNETH S. HARA
THE ADJUTANT GENERAL



JUSTINE NIHIPALI, MANAGER
COASTAL ZONE MANAGEMENT
PROGRAM

COMMISSION STAFF



Leah
Laramee
COORDINATOR

COMMISSION CO-CHAIRS



SUZANNE
CASE
CHAIRPERSON OF THE
DEPARTMENT OF LAND
AND NATURAL
RESOURCES



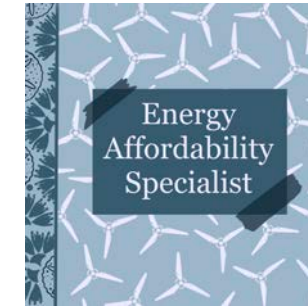
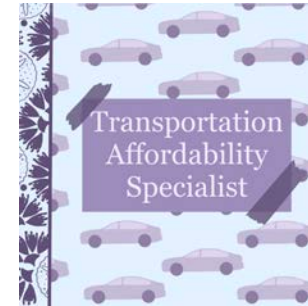
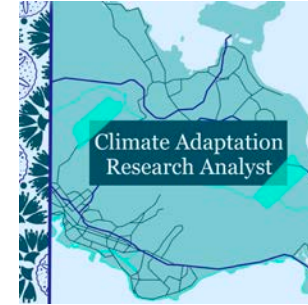
MARY ALICE
EVANS
DIRECTOR OF THE
OFFICE OF PLANNING

COMMISSION MEMBERS

Climate Ready HI Cohort

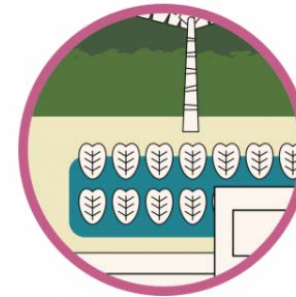
Spread across four key state offices:

- Department of Land and Natural Resources
- Hawai'i Department of Transportation
- Hawai'i Department on Planning
- Hawai'i State Energy Office
- County of Hawai'i
- County of Kaua'i

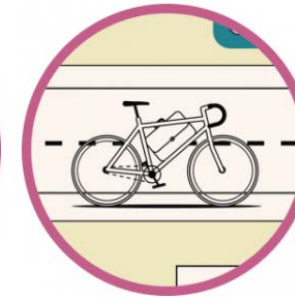


Grants-to-Projects Bridge

- Purpose: Connect under-utilized grants to projects lacking funds
- Supports Commission's statement to help direct investments to priority climate-smart infrastructure



RESILIENCE PROJECTS



TRANSPORTATION PROJECTS



AVAILABLE GRANTS





Transportation Projects

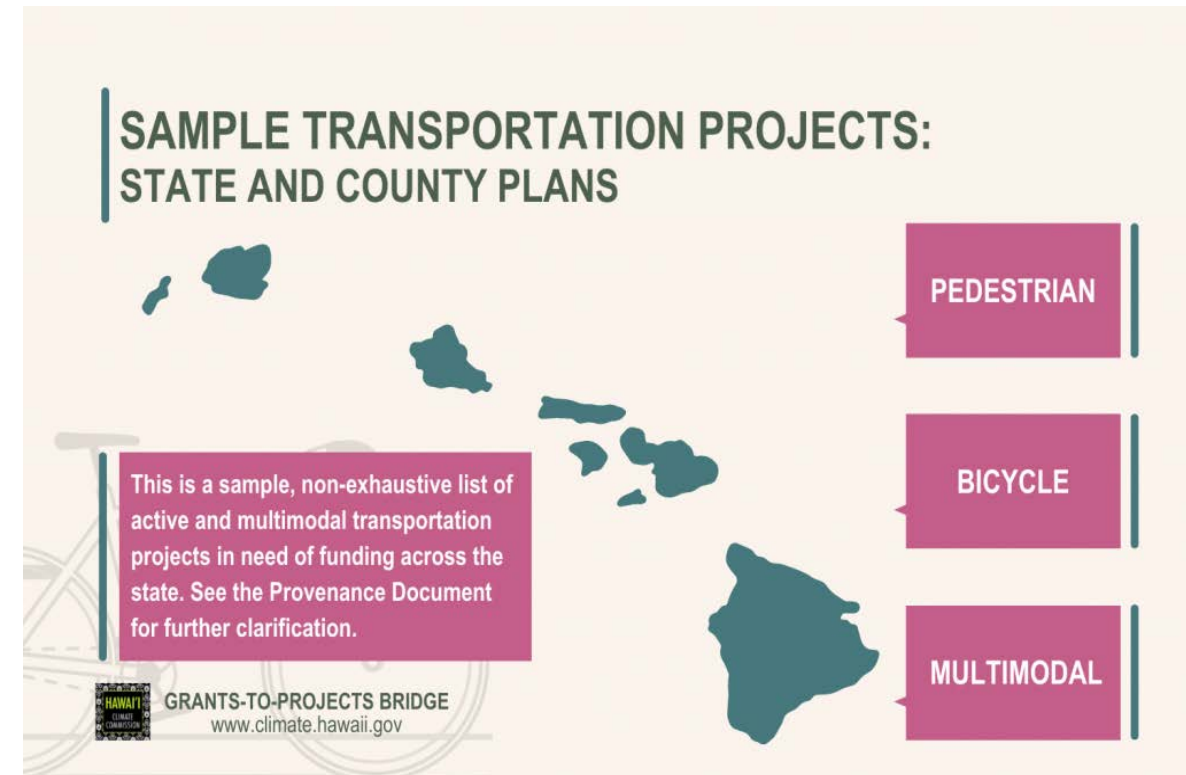
- Projects are from State and County plans
- Includes multimodal transportation projects
- Includes the following project information
 - Priority;
 - Location;
 - Jurisdiction;
 - Project type and description;
 - Cost estimate; and
 - Project length (miles).



GRANTS-TO-PROJECTS BRIDGE

Active Transportation Projects

- Hele Mai Maui 2040
- Bike Plan Hawai'i 2020
- Hawai'i Pedestrian Master Plan 2013
- O'ahu Bike Plan 2019
- O'ahu Pedestrian Plan 2021
- Kapa'a Transportation Solutions 2015
- Kaua'i Public Works 2017





Hele Mai Maui 2040 Long Range Transportation Plan Total County Funds Needed: \$ 942,771.00

[Hele Mai Maui 2040 Long Range Transportation Plan Homepage](#)

Recommended Plans

Location	Project Type	ID	Project Name	Priority	Cost(\$1,000)
Central	Transit Improvements	S32	Ka'ahumanu Ave Transit & Multimodal Corridor	Near-Term (1-5 years)	\$ 10,000.00
Central	Transit Improvements	T7	Waikapu Baseyard Transit Maintenance Hub	Long Term (12-20 years)	\$ 50,000.00
Central	Transit Improvements	T9	Central Maui Transit Hub	Near-Term (1-5 years)	\$ 3,000.00
East	Maintenance & Preservation	S31	Kalepa Revetment & Seawall Repairs	Near-Term (1-5 years)	\$ 15,600.00
East	Maintenance & Preservation	S48	Kalepa Point Rockfall Repairs	Near-Term (1-5 years)	\$ 350.00
East	Safety Corridors	S58	Hāna Hwy Safety Improvements	Long Term (12-20 years)	\$ 140,000.00
South	Complete Streets	S22	South Kihei Rd Improvements	Near-Term (1-5 years)	\$ 5,450.00
South	Complete Streets	S24	South Kihei Rd Sidewalk Improvements	Near-Term (1-5 years)	\$ 1,900.00
South	Complete Streets	S33	Ohukai Rd Sidewalk Improvements	Near-Term (1-5 years)	\$ 600.00



Resilience Projects

- Projects are from state CIP requests
- Includes nature-based solutions
- Includes the following project information
 - Location;
 - Project type and description; and
 - Cost estimate





Grants to Projects Bridge: Resilience and Natural and Working Lands Projects

[Grants to Projects Bridge Homepage](#)

Priority (Y / N)	State / County	Plan	Category	Field	Project Name	Project Description
	Hawai'i	DOFAW	Forest	Erosion, flooding, adaptation	Puu makaala Predator Proof Fence	The project area with a predator proof fence creates the only predator free area in the state for 7 endangered forest bird species, including Akiapola'au and Alala. Area is currently ungulate free for 20+ years and has perimeter road access
	Hawai'i	DOFAW	Forest	Mitigation, Adaptation, Fire	West Hawai'i Water Infrastructure for Fire Management	Improve upon and expand fuel breaks in the Puu Waawaa Forest Reserve and Puu Anahulu Game Management Area to create a maintainable, strategic network of fuel breaks.
	Hawai'i	DOFAW	Coastal	Biodiversity, nature based solutions, green infrastructure, wetlands	West Hawai'i Coral Restoration	Restore bleached corals at multiple sites in west Hawai'i
	Kaua'i	DOFAW	Coastal	Biodiversity, resilience, Recreation and tourism, coastal flooding, nature-based solutions, green infrastructure, adaptation, forest products, timber,	Mana Plains FR Sustainability Education Center	The Kawaiele and Mana wetlands serves a very important roll in providing a place for endangered water birds (Nene, Coot, Stilt, Koloa Duck, etc.) to safely live and nest away from the PMRF Militaray base, the highway where vehicles drive very fast and the agricultural fields on the other side of the highway. The State is in the process of expanding this wetland by 100 acres. A sustainability center will allow students and visitors a place to learn about these rare endangered birds, as well as see Additional Dwelling Units for alternate housing options that will be made from Hawaiian grown woods that currently pose a fire threat.
	Kaua'i	DOFAW	Forest	Biodiversity, resilience, aesthetic values, cultural knowledge and heritage values,	Kuia Natural Area Reserve Rare Plant Fence	This project involves building a new 15-acre fenced unit to protect a rare plant the Psychotria hobdyi. It will protect this important native species which only occurs in this specific region from deer, goats, and pigs. This will help prevent a rare plant from going extinct, and create a place for other plants to be restored.
	Kaua'i	DOFAW	Forest	Erosion, fire, recreation and tourism, safety,	Puu ka pele and Kekaha GMA fire mitigation	Presuppression, assistance with removal of log and slash piles, 40 miles of firebreak road repair and deferred maintenance .approximately 1100 miles of roadways found within and managed in the forest reserve system statewide, not including the numerous access trails. These, often unimproved, access roads are subject to erosion and degradation from weather events and increased use. There are access road and trail upgrade, improvements, and redesign projects throughout the state. These roads and trails are the primary way the public, recreational users, and the Department accesses the forest reserve for enjoyment, hiking, hunting, gathering, and for management of the special natural resources founds in these areas
	Maui	DAR	Coastal		Molokai Alien Algae Removal and Native Limu Planting	
	Maui	DOFAW	Forest	Mitigation, Adaptation, Fire	West Maui Fire prevention & Erosion control	Plan, design, and construction of approximately 15 miles of firebreaks, reduction of fuels, installation of water tanks or sources for fire-fighting, and construction of erosion.



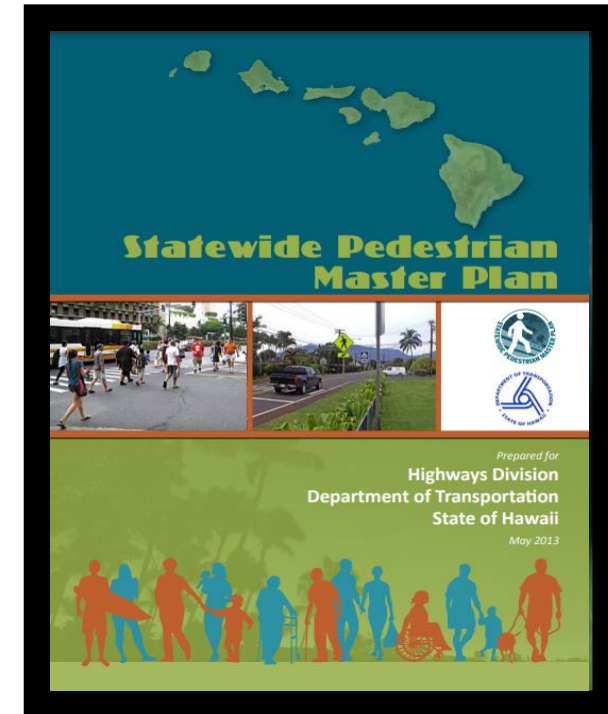
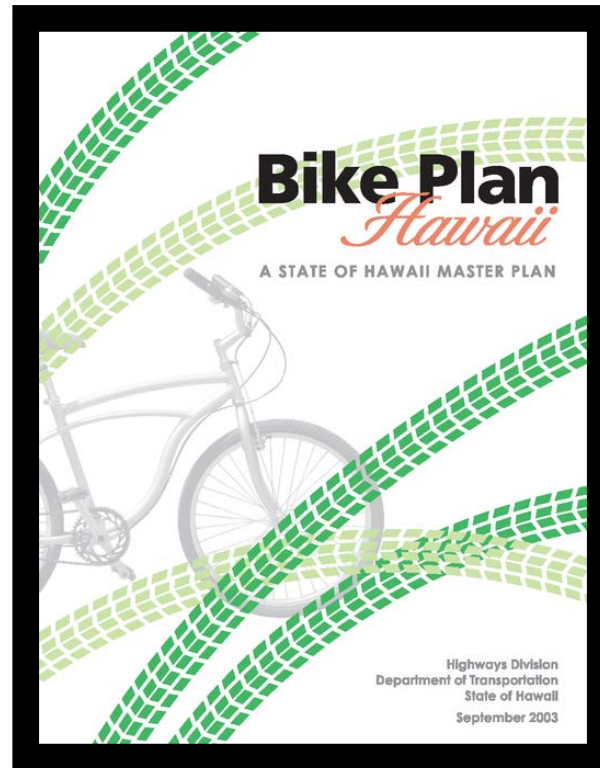
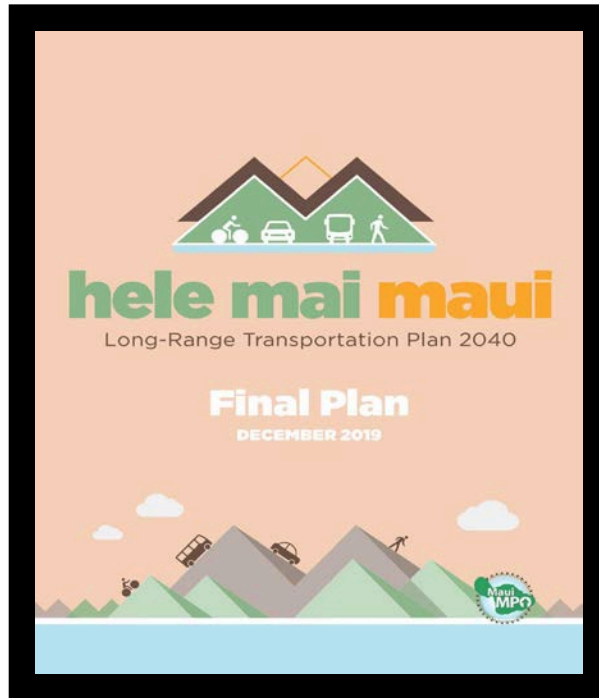
The Bipartisan Infrastructure Law

- The Bipartisan Infrastructure Law (BIL) passed on November 15, 2021
- The bill provides over **\$567 billion** in new spending on infrastructure over the **next five years**
- Hawaii is expected to receive \$316 million over five years to improve public transportation options across the state
- Opportunity to implement climate smart actions and avoid locking in carbon emissions for years to come.
- Flexible funding for innovative projects



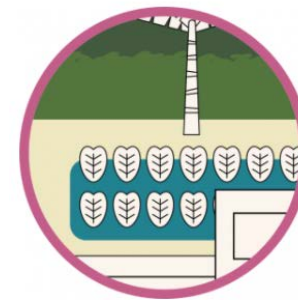
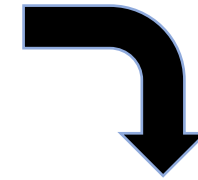
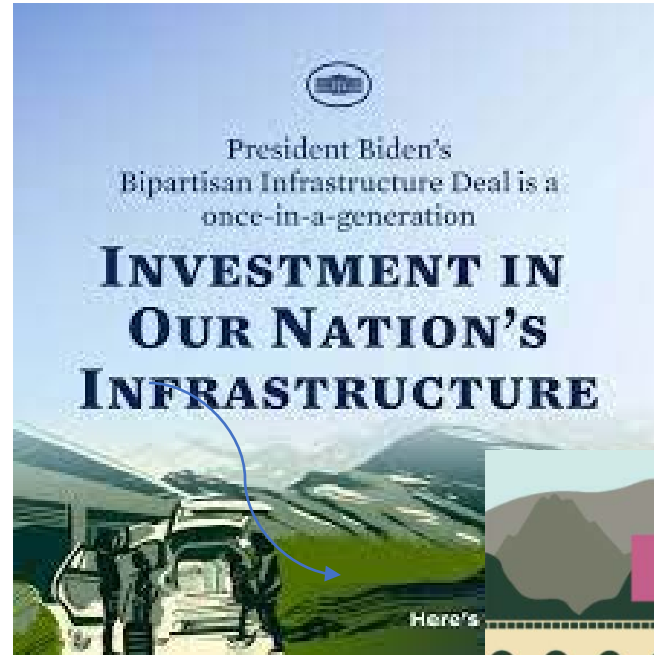
Grants Crosswalk

Connect projects identified in existing plans to relevant BIL grants

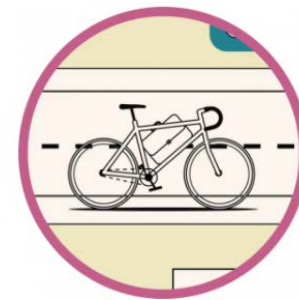


Bipartisan Infrastructure Law Crosswalk

- Grants From BIL
- Information from grants to help state agencies be more informed on funding sources for plans
- Ideas of expanding the information in crosswalk



RESILIENCE PROJECTS



TRANSPORTATION PROJECTS



AVAILABLE GRANTS



Mahalo Nui Loa

Questions?

Contact Info:

Leah.J.Laramee@hawaii.gov