

The background features a repeating pattern of stylized, light-colored illustrations. It includes palm trees with fronds, birds in flight, and various fish species, all rendered in a simple, line-art style. The overall color palette is a soft, muted beige or light tan.

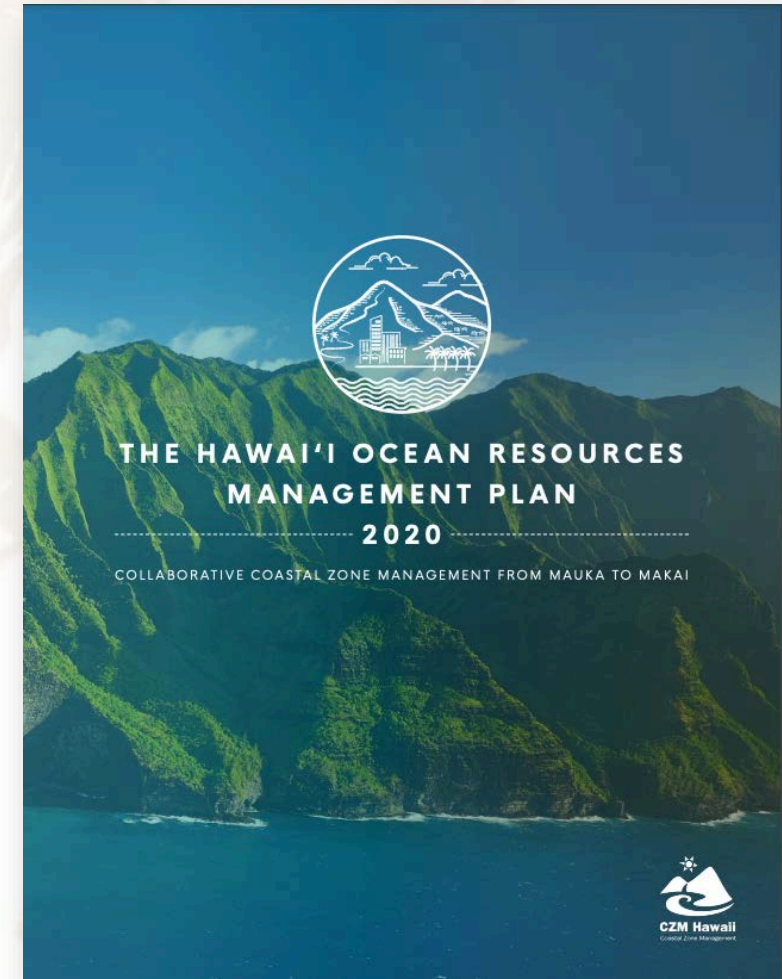
Climate Adaptation Planning: A State-wide Overview

Office of Planning & Sustainable Development,
Coastal Zone Management Program

PICHTR
February 15, 2023

Hawai'i Coastal Zone Management Program (CZM) & Climate Adaptation Planning

- CZM as a network agency – collaborates with agencies with land and water resource management responsibilities
- Hawaii Ocean Resources Management Plan (ORMP)
 - focus on addressing management gaps that cross multiple agency jurisdictions.
 - 2020: Focus Area – Coastal Hazards & Development
- Climate Commission Co-Chair (OPSD Director) and Commission (CZM Program Manager)



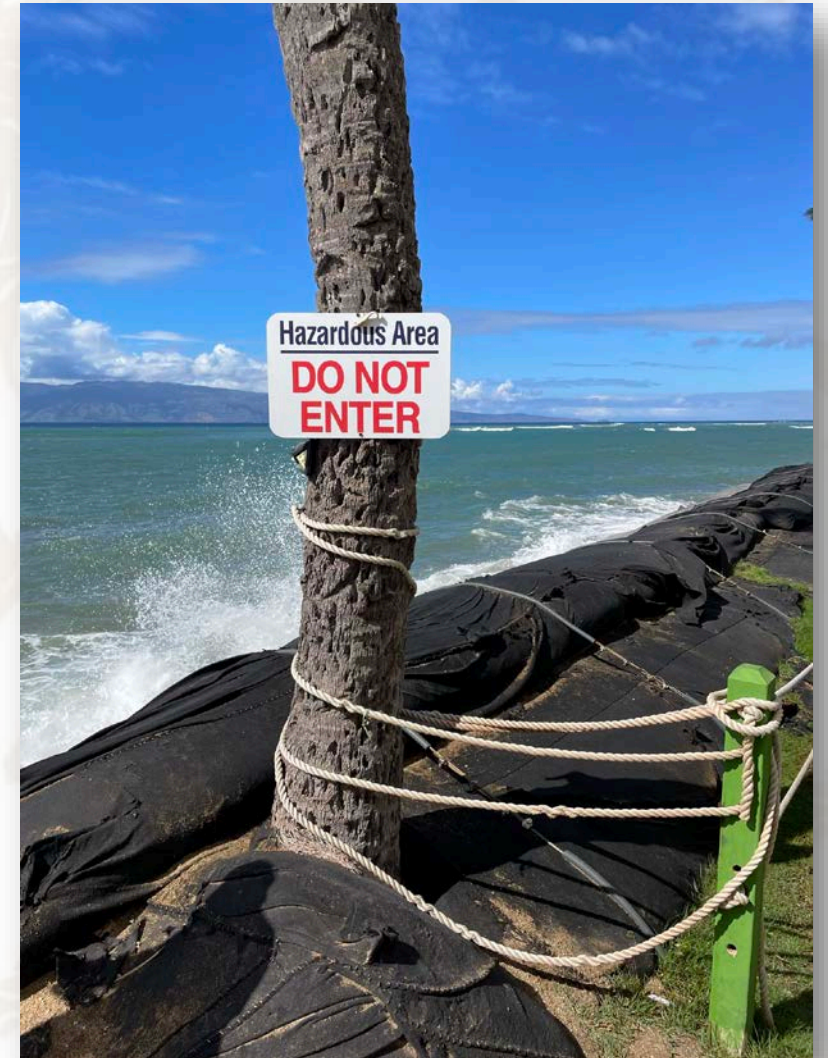
Adaptation Planning in Hawai'i

Current Status:

- The need to incorporate mitigation and adaptation into planning is generally accepted
- Most agencies are in the vulnerability assessment phase

Four Key Themes to Address:

- Governance
- Natural Environment
- Built Environment
- People



Governance:

Hawai'i Silver Jackets Team

Initiative Objective:

Inform & develop shoreline protection priorities and guidelines and/or a decision-making framework by facilitating discussions amongst regulatory and planning agencies.

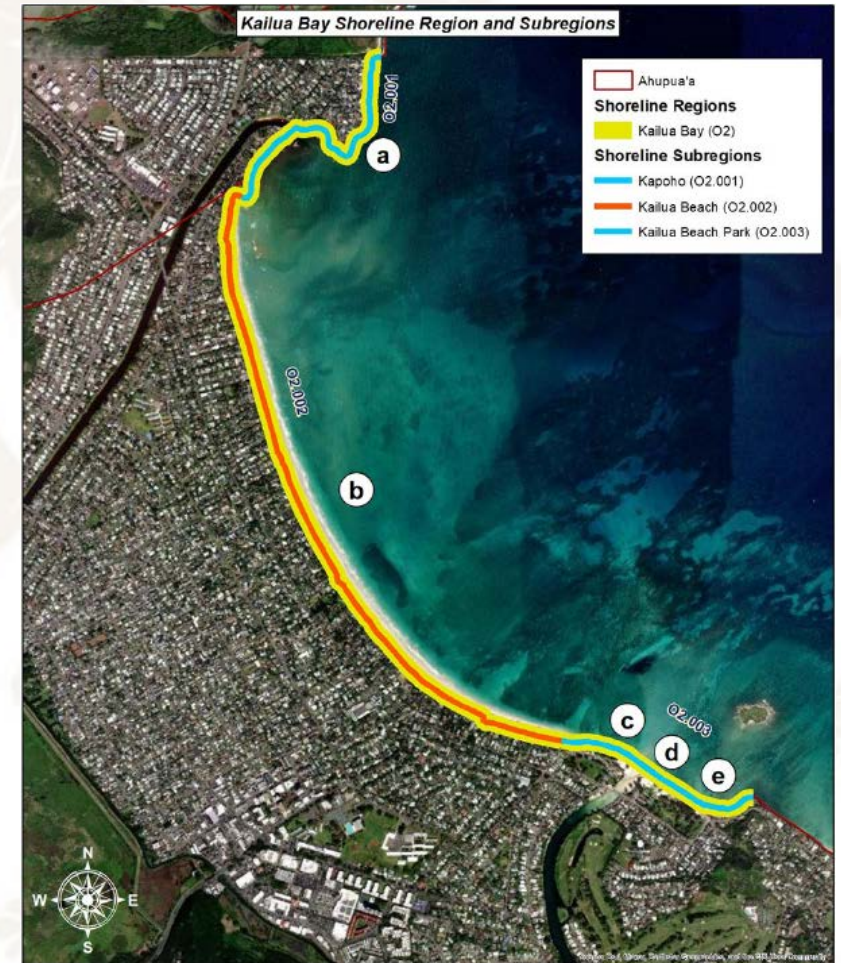
• **Hawaii Silver Jackets Core Team:**

- OPSD - CZM
- Dept of Land & Natural Resources, Office of Conservation & Coastal Lands
- Hawai'i Emergency Management Agency
- UH Sea Grant
- US Army Corps of Engineers
- NOAA Office of Coastal Management
- County Planning Departments



Natural Environment: Regional Shoreline Management Study

- Rethinking the approach to shoreline management
- Shifting from parcel by parcel to region and subregions
- Regional shoreline management = more coordinated, large-scale and proactive interventions



Built Environment: Act 178, SLH 2021



Section of Kaunakakai Harbor during King Tides (PC: UH Sea Grant, King Tides Project)

FACILITIES IN SLR-XA BY ISLAND

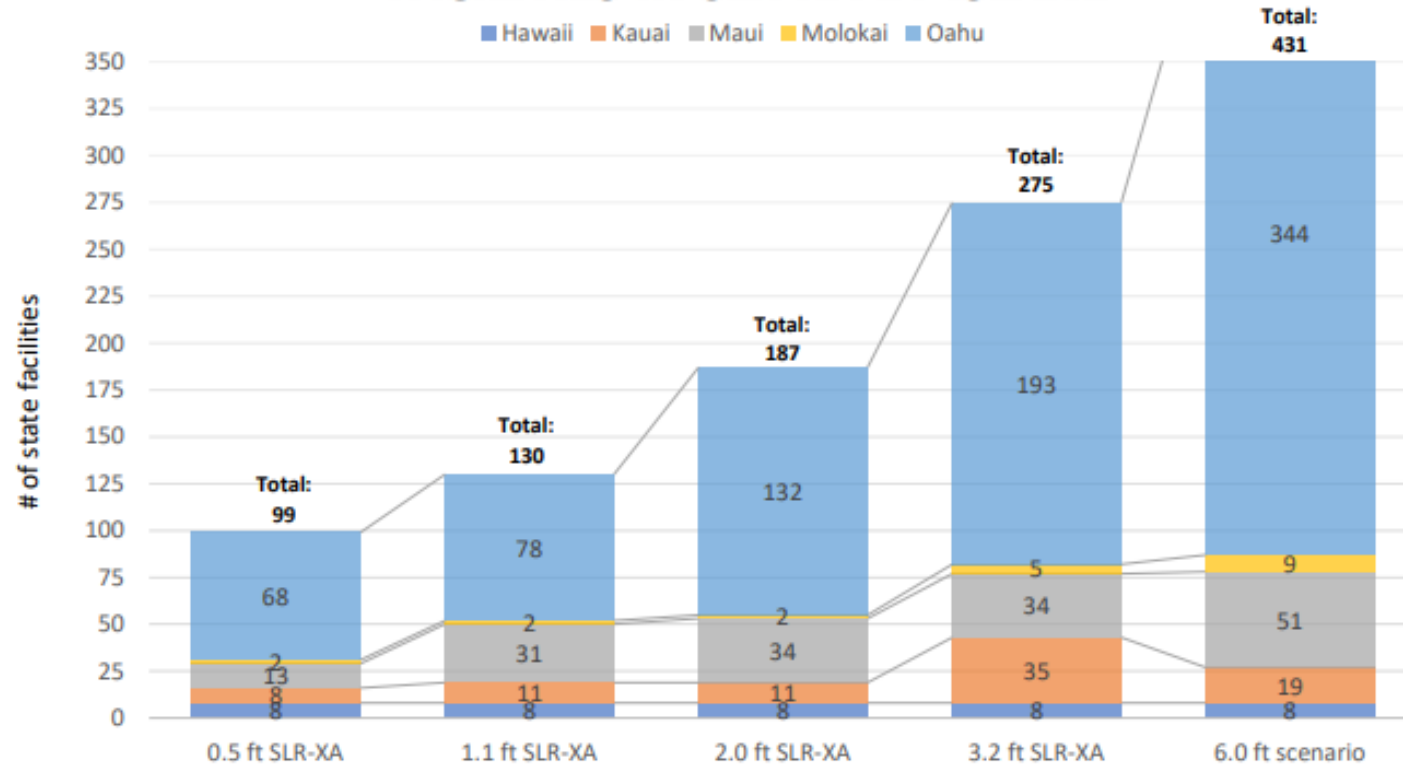
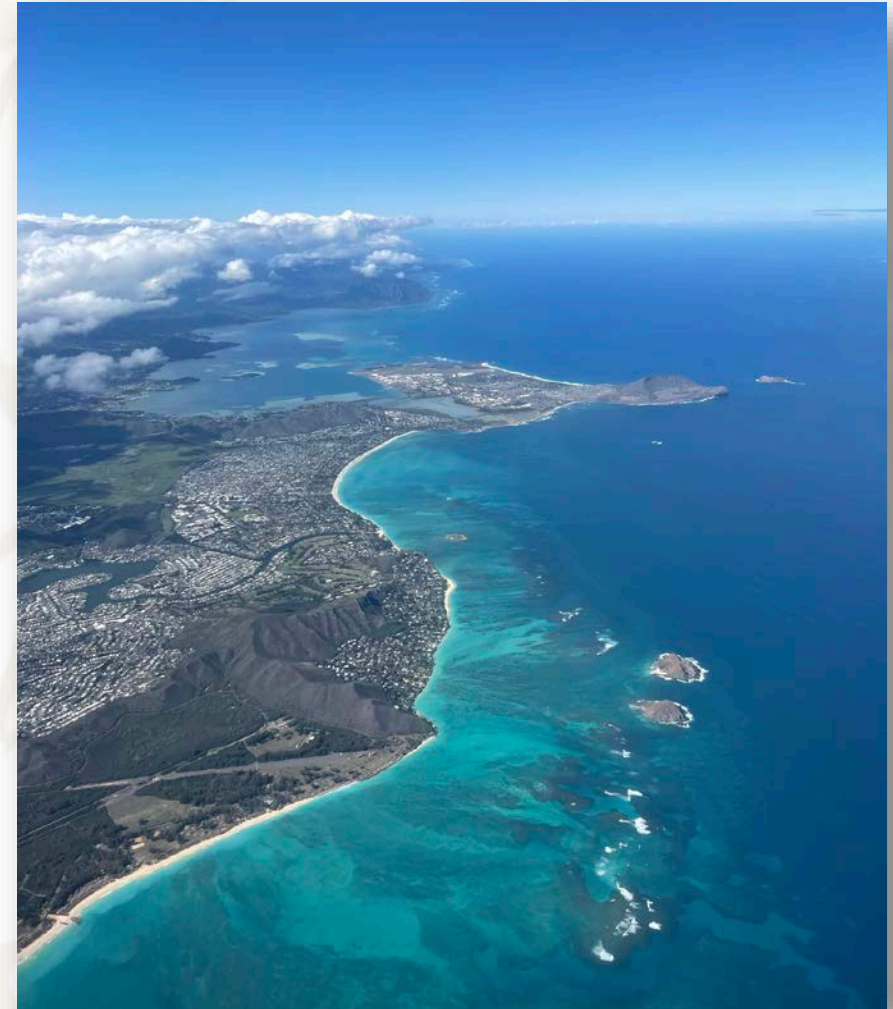


Chart 1: State facilities in sea level rise scenario by island

People:

Social Vulnerability & Coastal Hazards

- 1) Which coastal communities are at a disproportionate risk to long-term sea-level rise and coastal erosion hazards?
- 2) How will sea level rise unequally impact Hawaii's coastal communities?
- 3) What are other factors that could affect a communities' risk to sea level rise and coastal erosion hazards?
- 4) What do communities need to adapt to sea level rise in the future?





Sea Level Rise Adaptation For State Facilities

OPSD in coordination with state agencies with facility management responsibilities, is charged with (1) identifying state facilities vulnerable to sea level rise and other natural hazards, (2) identifying adaptation options for vulnerable facilities and (3) submitting annual reports to the Governor, Legislature and State Climate Commission. (Act 178, SLH 2021)



Regional Shoreline Management Scoping Study

OPSD is exploring a more comprehensive approach to shoreline management in Hawai'i. This project, "Developing a Scoping Study for a Regional Shoreline Strategy for Hawai'i" will explore strategies for utilizing environmental characteristics and conditions to define "regions" for the purposes of rethinking shoreline management across the state, with the intention of facilitating larger-scale, nature-based, comprehensive management strategies.



Hawai'i Shoreline Change Studies For Kaua'i, Maui, And O'ahu

OPSD, in collaboration with other federal, state, and county agencies, provided funding support to the University of Hawai'i Coastal Geology Group in the tracking, mapping, and providing shoreline change data to inform shoreline setback regulations to facilitate appropriate siting for new development.

Mahalo!

Sarah Chang

Office of Planning & Sustainable Development, Coastal Zone Management Program

sarah.m.chang@hawaii.gov

www.ormp.hawaii.gov